

Command Post Anywhere Experiment

Exploiting TeamSight for Ops Concepts

LTC Mervyn Cheah

LTC Chew Lock Pin

Gwenda Fong

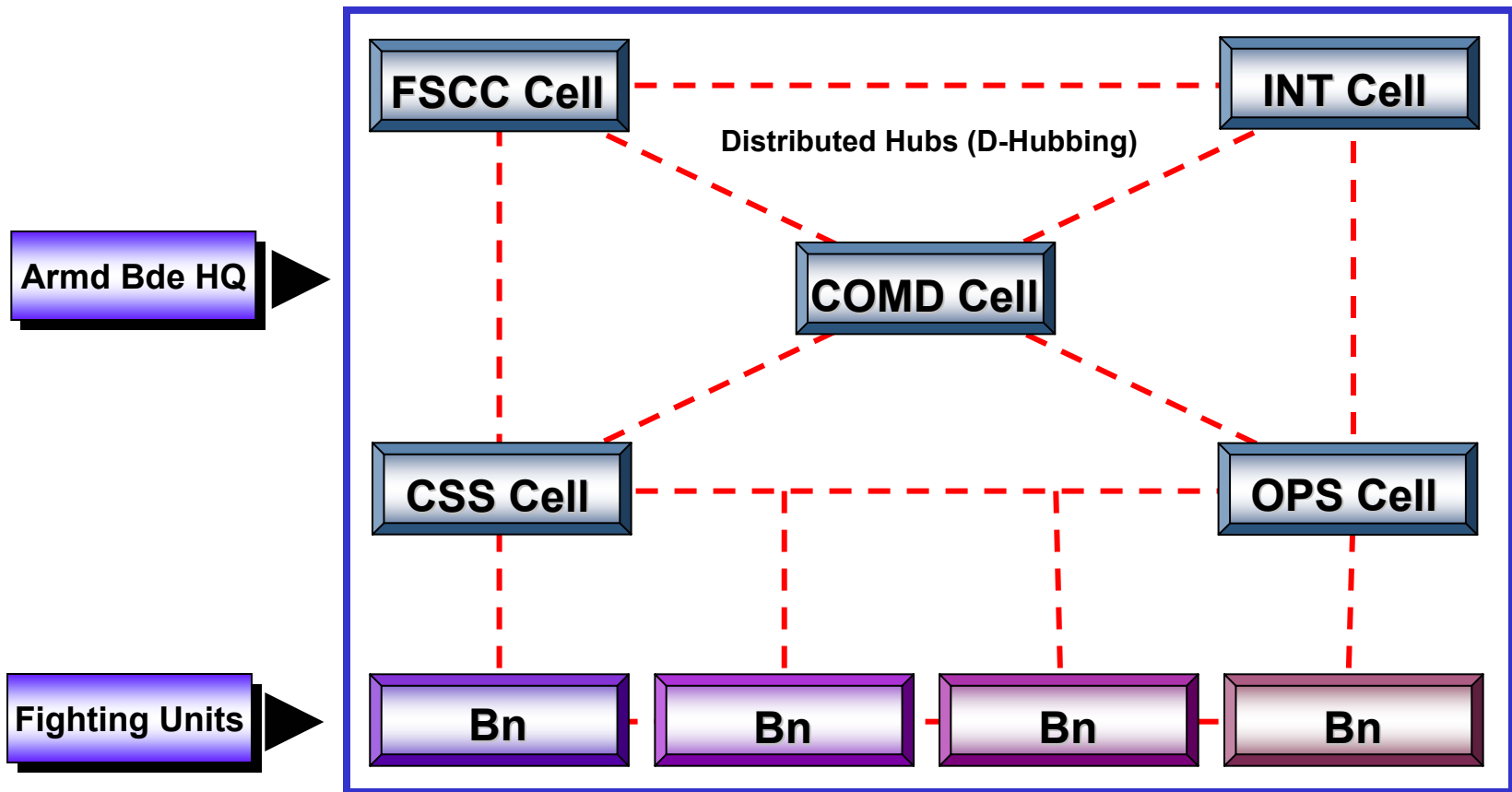
Cheryl Ann Teh

Elsie Toh

Challenging Old Ways

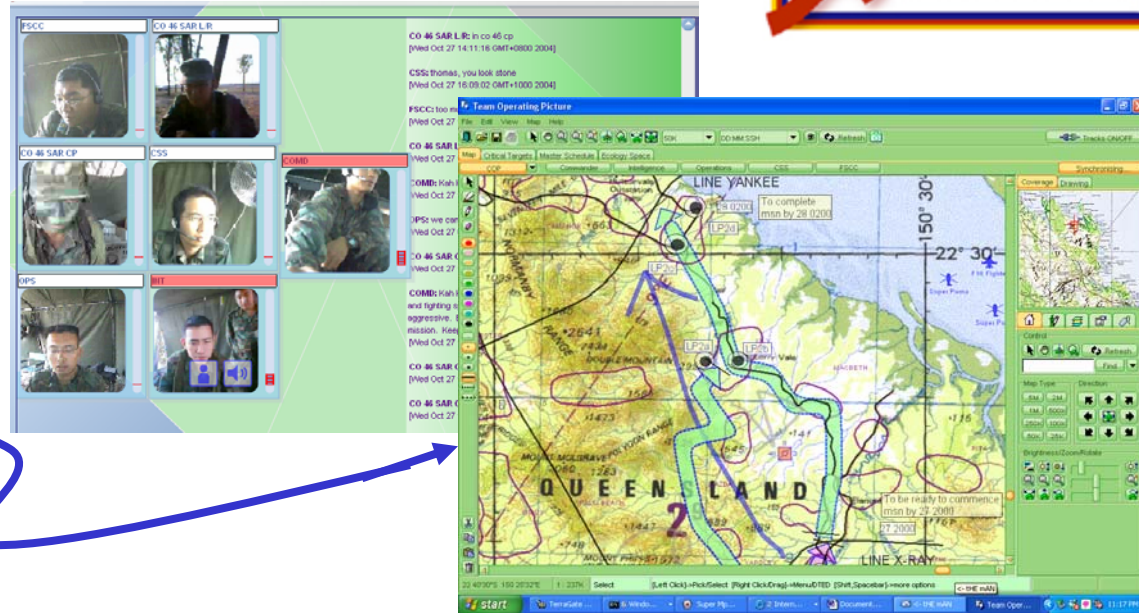
- Fixed physical structures vs Information structure
- Physical co-location
- Command brief
- Sequential planning

Command Post Anywhere



- Information structure that is *mobile, stable, continuous, self-synchronising, self-healing, survivable*
- Motivation is to enhance Bde HQ's **span of command & control**

TeamSight



Projection Screens Display at COMD Cell in a Distributed CP set-up

- GIS-based collaborative tool with separate workspaces for each staff officer; Supplemented with video-conferencing, text chat, & e-mails
- Advantages:
 - Easy access to info thus reducing need for explicit dissemination
 - Individual workspace while maintaining Team Operating Picture
 - Visualize battlespace +/- 2 echelons as well as that of peers

Expt Future Might 04

How can we exploit the Power of IKC2 to enable a Future Armoured Bde TOC to **Enhance its Survivability** while generating **Superior Operating Tempo** for the Land Battle?

What kind of eXpt is this?

Three Types*

1. **Discovery Experiment**

- Designed to observe & catalogue the application of new technology, processes & organization to military scenarios.
- “Hypotheses generation” experiments, guided by innovation propositions.

2. **Hypothesis Testing Experiment**

Classic type as conducted by scientists to falsify hypothesis. Conduct of these experiments require specific hypotheses to be formulated and tested.

3. **Demonstration Experiment**

To demonstrate known truths, akin to experiments conducted at schools where chemistry or physics experiments demonstrates to students the truth of the theories.

eXpt Objectives

To investigate the following hypotheses:

- 1) D-hubbing augmented with Team-Sight will have the same sense-making ability as a Centralized CP
- 2) D-hubbing augmented with Team-Sight will provide continuous situation awareness thereby increasing the operational tempo of the Brigade
- 3) D-hubbing will enhance Brigade CP survivability

Conduct of eXpt

- Preparation for experiment
- Bde CP Operations
 - Condition 1: Centralised CP setup (Run 1)
 - Condition 2: D-Hub CP Concept (Runs 2-6, each with varying levels of connectivity)
- Measures:
 - Situation Awareness Assessment
 - Analysis of Communication Patterns
 - Contextual Inquiry

eXpt Conditions

- Within D-hub setup, ability to command and control with:
 - Full Network Performance (Video, Voice, Collaborative C2)
 - Degraded Network Performance (Less Video and Voice)
 - Loss of certain Network Performance (No links to some Cells)

Centralised CP Set-up (Run1)

COMD Cell



INT Cell



30 m

Wired LAN (100mbps)

30 m

30 m

Wired LAN (100mbps)

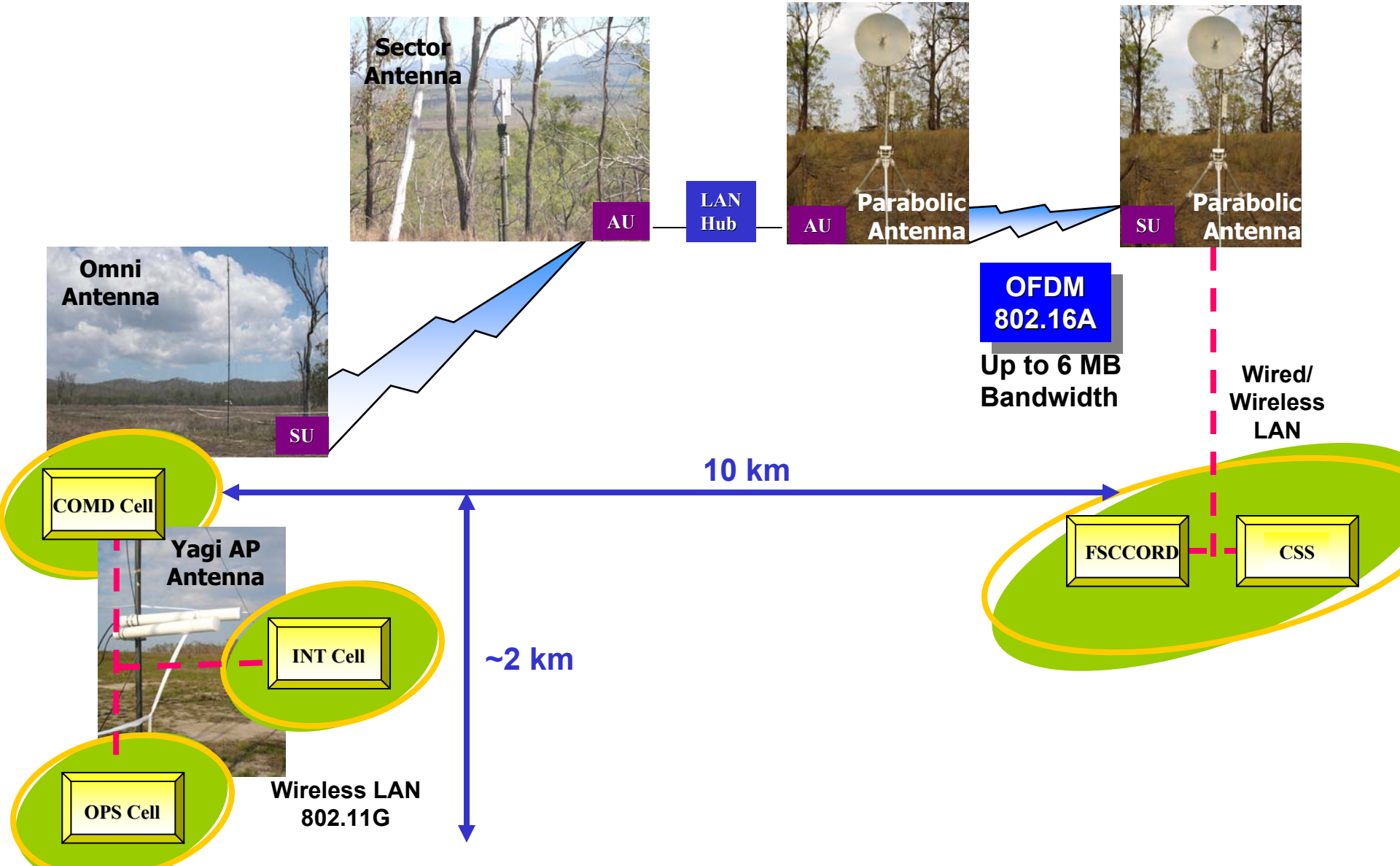
OPS Cell



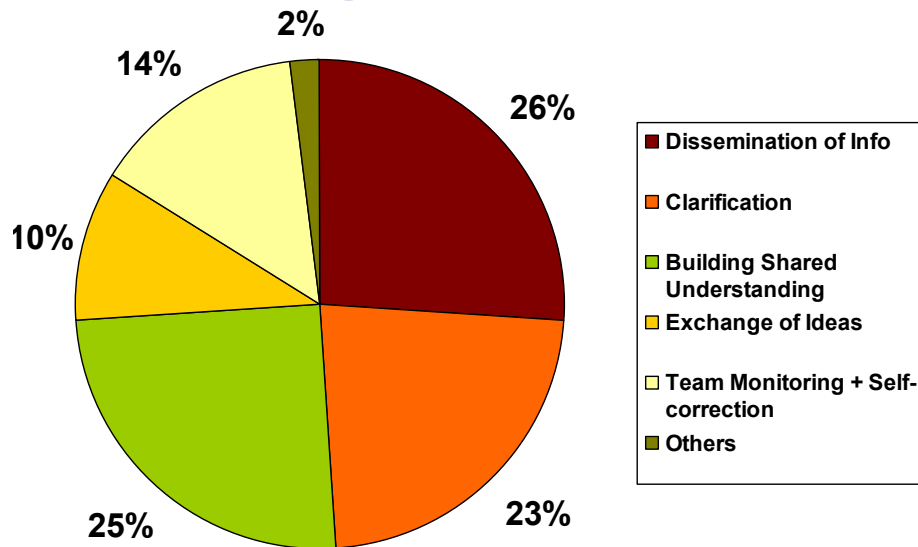
FSCC/CSS Cells



D-hub CP Set-up (Runs2-6)

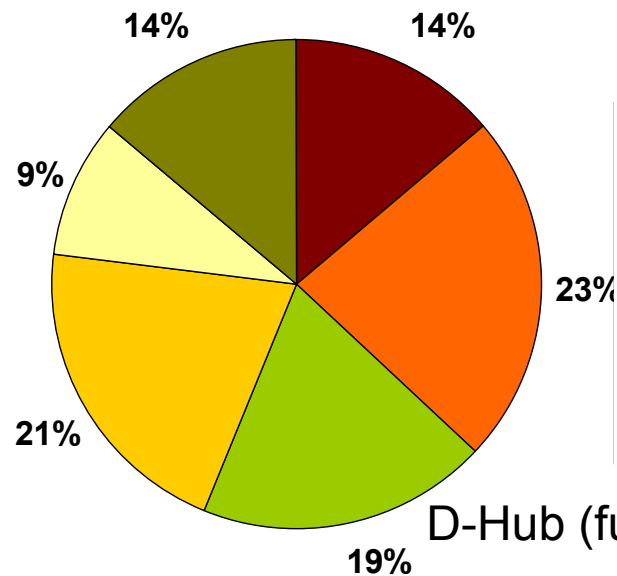


Findings - Communication Activity



Centralised CP

Moderate inter-rater agreement
(Kendall's coefficient of concordance, $W = 0.450$)



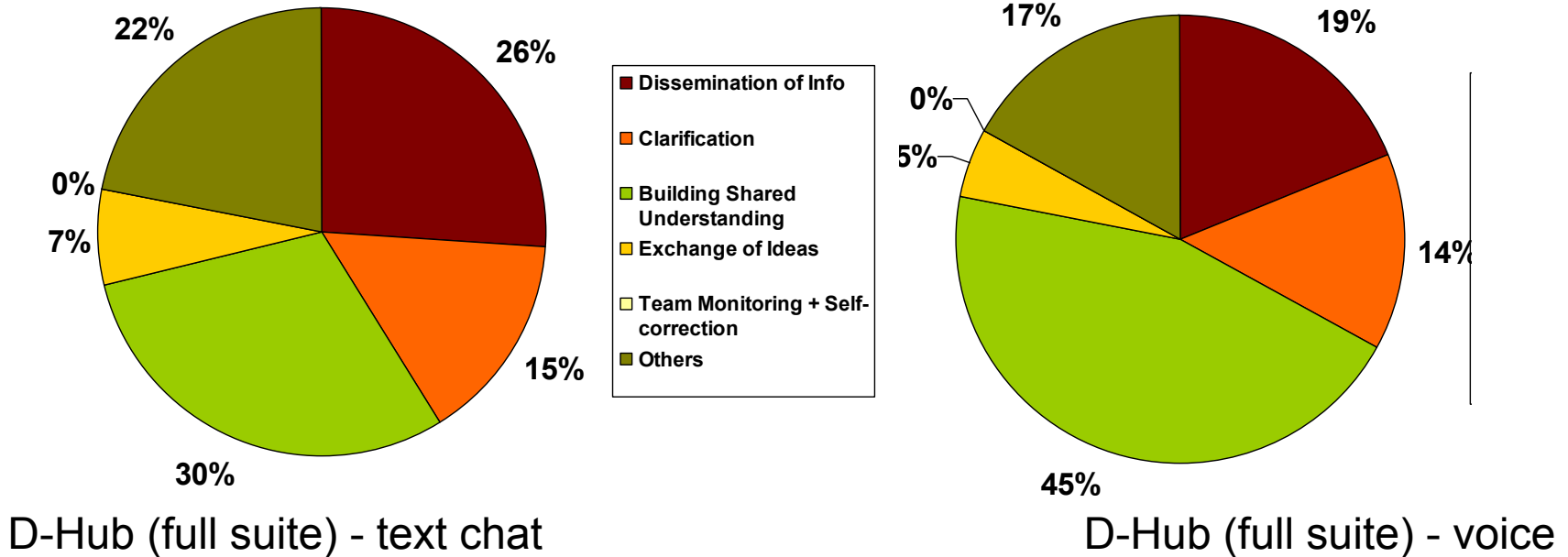
D-Hub (full suite)

| Test Variable | p-value |
|-------------------------------|---------|
| Dissemination of Info | 0.109 |
| Building Shared Understanding | 0.102 |
| Exchange of Ideas | 0.109 |

Wilcoxon Signed Rank Test

- Greater % of communication for exchange of ideas, less for info dissemination and building of shared understanding as compared to centralized CP
- TeamSight provides platform for information dissemination and building of shared understanding

Findings - Communication Activity

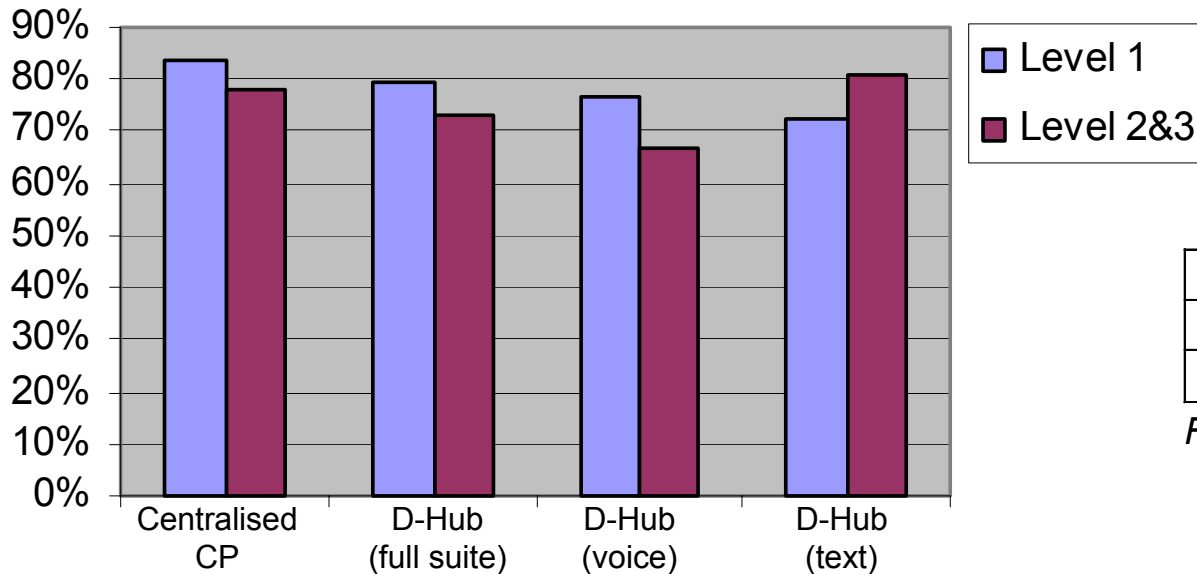


- Various communication tools for different purposes
- Dissemination of information via text chat
- Building of shared understanding via voice communications

Findings - Situation Awareness



Situation Awareness across various Set-Ups



| Test Variable | p-value |
|---------------|---------|
| Level 1 | 0.591 |
| Level 2&3 | 0.202 |

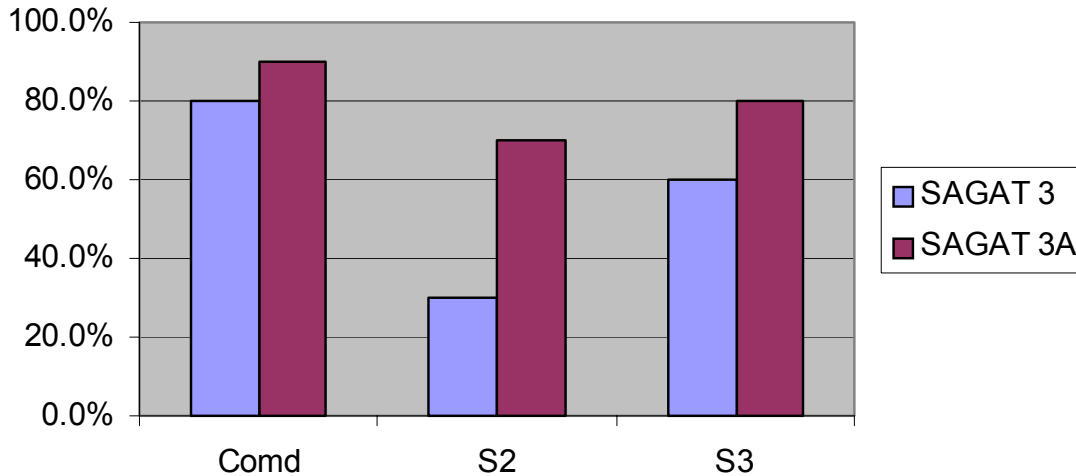
Friedman Test

- No significant difference in SA across all set-ups
=> TeamSight successfully mitigated distributed set-up
- Level 2&3 > Level 1 SA in D-Hub (text) because text chat serves as a record

Findings - Situation Awareness



D-Hub (full suite)



- Increase in SA levels going from the 1st to the 2nd administration for each run, across all roles
- Staff officers would have a better understanding of the scenario as it unfolds and with discussion
- Effect more pronounced in runs with TeamSight

Discussion

- Hypothesis 1: Same level of sense-making
- No significant difference in communication patterns.
 - D-Hub: Reduced info dissemination & building of shared understanding;
Increased exchange of ideas
- No significant difference in situation awareness levels



Discussion

- Hypothesis 2: Continuous SA leading to superior ops tempo
- No significant difference in situation awareness levels despite less frequent command briefs
 - Centralised CP: 80% of time spent working in own cell, 20% spent on P group meeting in Comd cell
 - D-Hub: Greater amount of concurrent activity
 - Commander able to oversee S2 and S3 action-reaction unobtrusively
 - Teamsight enables faster planning & re-planning – 1.5 hrs (without MCM, ADA, OPSCOORD) vs 4 hrs (doctrinal hrs for quick BP)
- Subsequent experiments need to look at quality of plans

Discussion

- Hypothesis 3: Enhanced survivability of Bde HQ
- Cells distributed across span of 10km
- Subsequent experiments need to measure EM signature



Conclusions

- Culmination of a series of smaller scale exercises that test CPA concept in a TeamSight environment
- Findings and observations indicate feasibility of such a set-up
- Paves the way for future experiments that seek to strengthen and extend the concept

Questions?