

Representability of METT-TC Factors in JC3IEDM

**Brian Ulicny^a, Christopher J. Matheus^a, Gerald Powell^b
Robert Dionne^a and Mieczyslaw M. Kokar^{a,c}**

^aVIStology, Inc., 5 Mountainview Drive, Framingham, MA, U.S.A.

^bU.S. Army RDECOM CERDEC I2WD , Fort Monmouth, NJ, U.S.A

^cNortheastern University, Boston, MA, U.S.A.

Talk Outline

- **What is METT-TC?**
- **What is meant by “representability”?**
- **What is JC3IEDM?**
- **Representation of METT-TC Factors in JC3IEDM**
- **JC3IEDM deficiencies for METT-TC representation**



What is METT-TC?

- Information that is gathered as part of the Intelligence Preparation of the Battlefield (IPB) process
- Acronym for several factors:
 - *Mission*
 - *Enemy*
 - *Troops*
 - *Terrain and Weather*
 - *Time available*
 - *Civilian Considerations*
- Defines the “context” in which intelligence analysis is carried out during a military operation



Representability in a KR

- If a statement can be translated into an equivalent KR statement it is *representable*.
- If only into unstructured text, *weakly representable*.
 - *E.g. English -> French*
- If the KR has a formal semantics, it is *formally representable*.
 - *E.g. English -> FOL*
 - *Permits automated inferencing. $Ax \ \& \ Bx \Rightarrow Ax$*

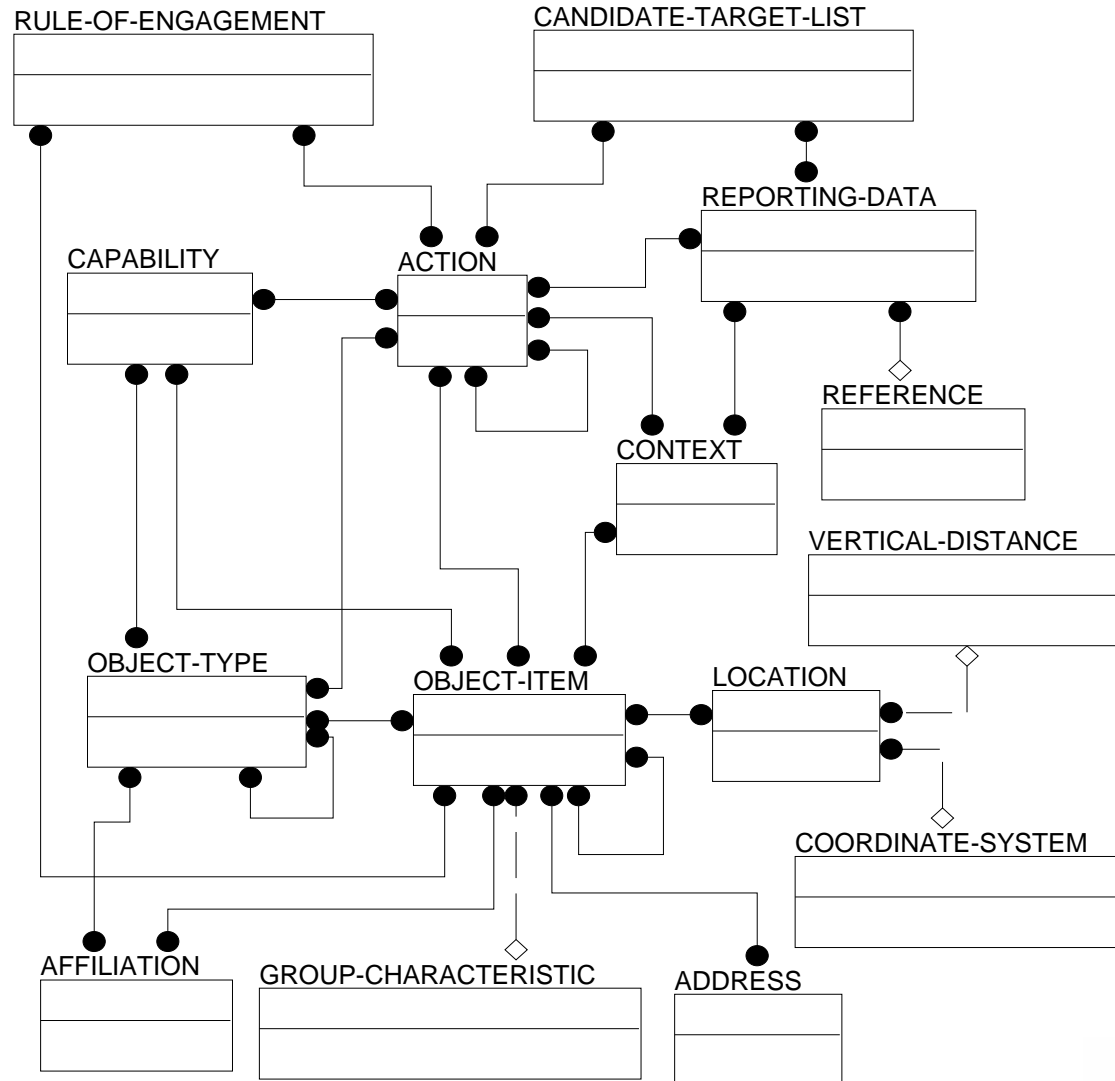


What is JC3IEDM?

- **Joint Consultation, Command & Control Information Exchange Data Model (JC3IEDM)**
 - *Generic Hub -> Land C2IEDM -> C2IEDM -> JC3IEDM*
- **Developed by the Multinational Interoperability Programme (MIP)**
 - *NATO organization*
 - *Goal: international interoperability of C2IS to support multinational (NATO) combined and joint operations*
- **Relational Data Model for Information Exchange**
 - *289 entities*
 - *396 relationships between entities*
 - *1729 entity attributes*
 - *nearly 7000 value codes*



JC3IEDM High-level Entities



Objects in JC3IEDM

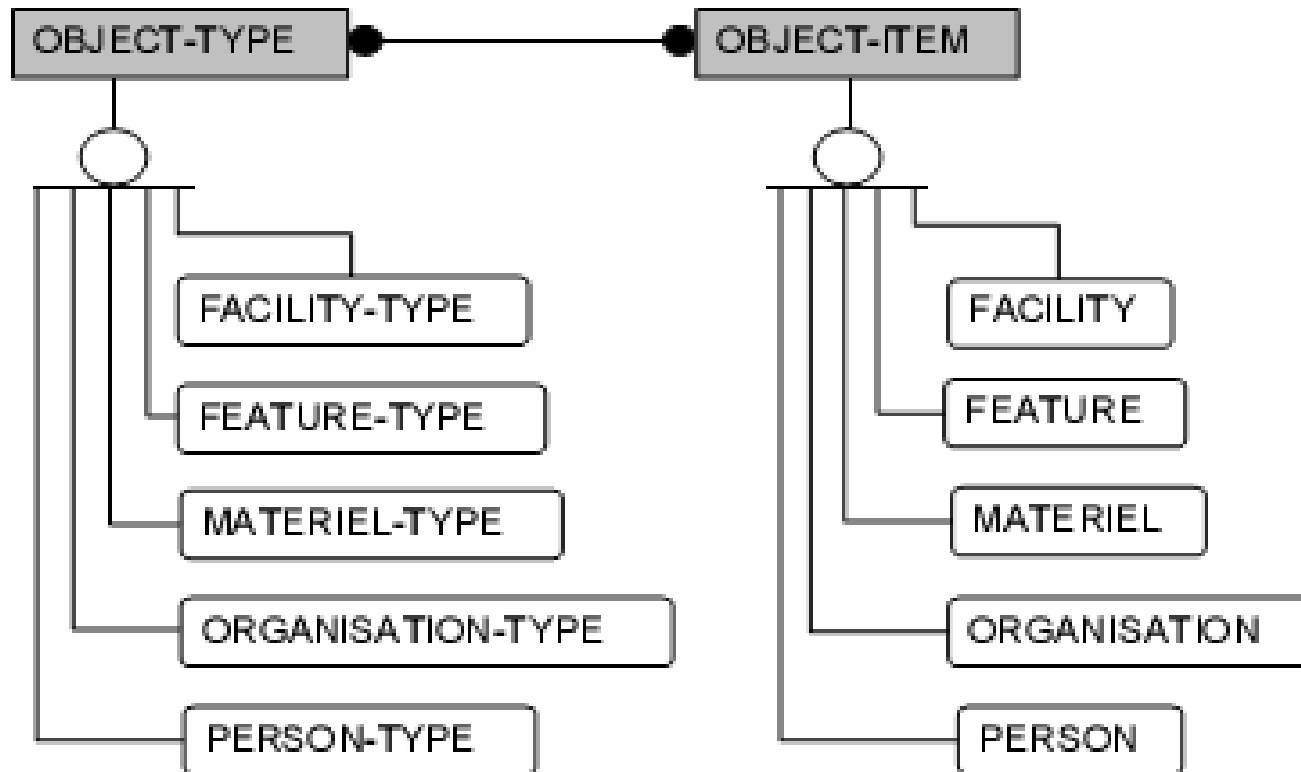


Figure 3. First Level Subtyping of OBJECT-TYPE and OBJECT-ITEM

Actions

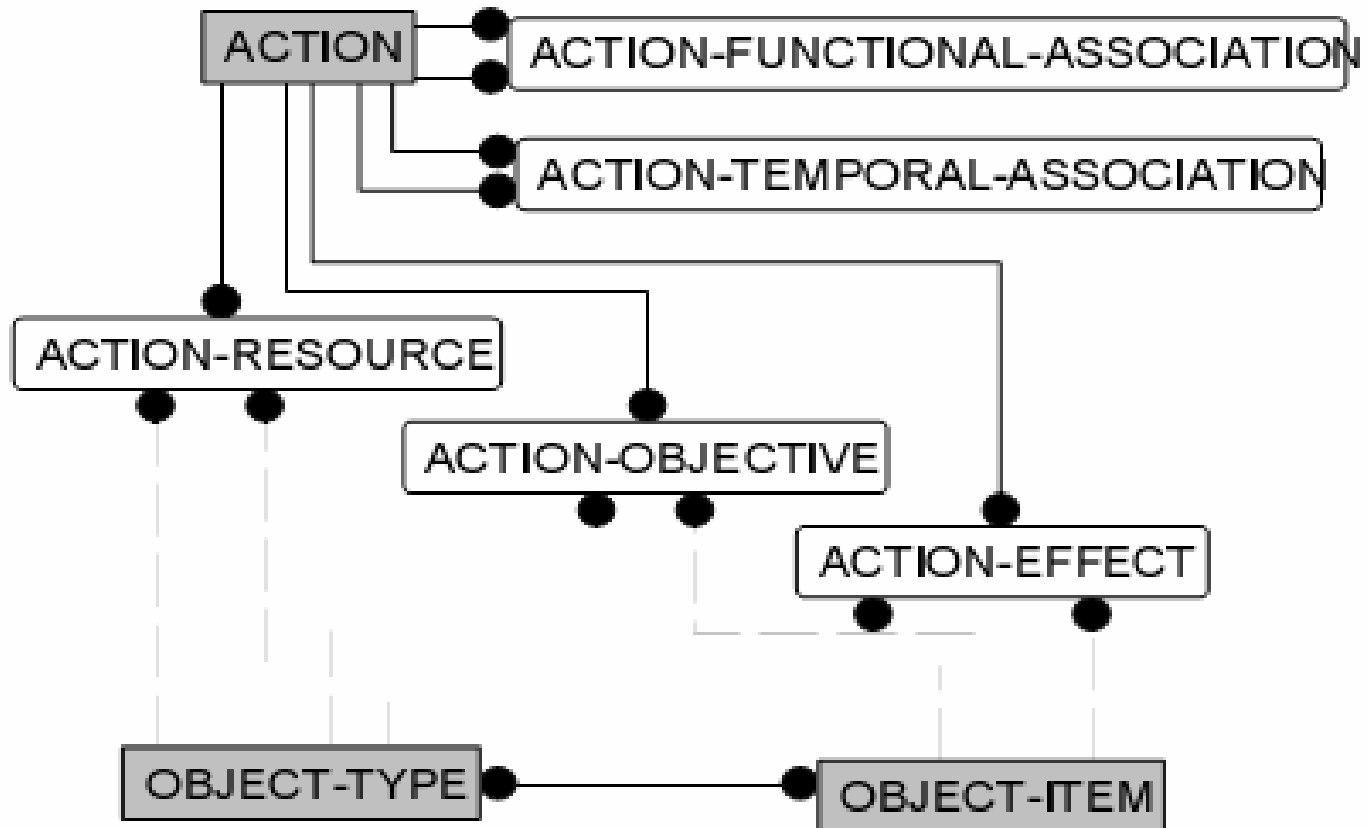


Figure 20. Basic ACTION Structure



Representing Complex Actions

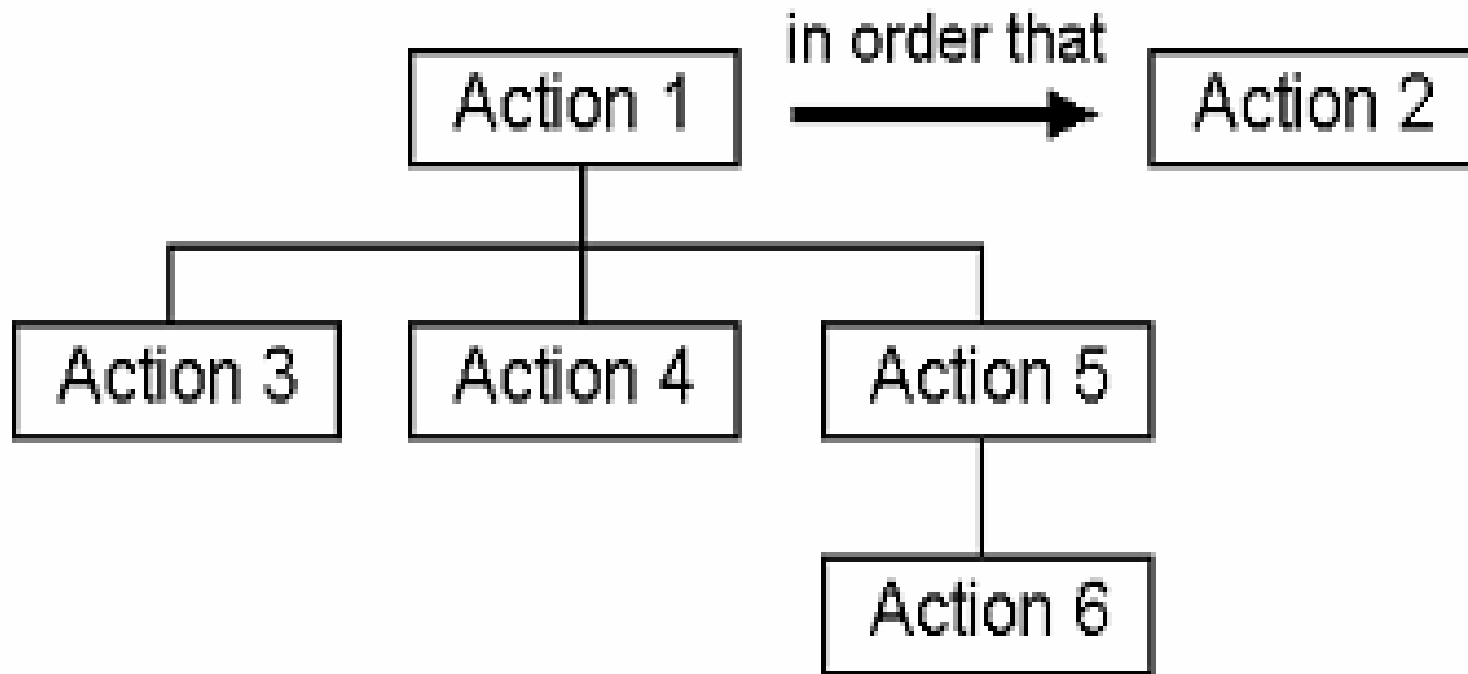


Figure 21. An Example of ACTION Hierarchy

Mission/Time Available

What	Ordered (Sequence of) ACTION-TASKs and subtasks
How	RULE-OF-ENGAGEMENT (Unstructured text)
Who	ACTION-RESOURCE UNIT
When (Time Available)	Absolute or Relative Expected Start/End Time
Where	LOCATION
Why	ACTION-RESOURCE intent-text (unstructured text)



Enemy/Troops

Organization, strength, location and tactical mobility	UNIT, LOCATION, MOBILITY-CAPABILITY
Equipment	EQUIPMENT
Capabilities	CAPABILITY
Doctrine	Assumed ACTION-TASK (citing REFERENCE)
Vulnerabilities	Possible X ACTION-TASK On/At Y
Probable COAs	Likely ACTION-TASK



Terrain & Weather

Observation	X observes Y
Fields of Fire	Zone-of-Fire
Cover	X is-protected-by Y
Concealment	
Obstacles	Type of CONTROL-FEATURE
Key/Decisive Terrain	FEATURES, FACILITIES
Avenues of Approach	ROUTE, with subtypes
Weather	METEOROLOGIC-FEATURE, Fog, Haze, etc.



Civil Considerations

Areas	Bounded LOCATIONS with AFFILIATIONS
Structures	FACILITIES, at building level. Little capacity for detail.
Organizations (non-military)	GROUP-ORGANISATION
People	PERSON (GROUP has-as-member, is-under-command-of)
Events	(Limited) ACTION-EVENT e.g. no religious holidays



JC3IEDM: METT-TC Deficiencies

- ❑ Mission Intent and Rules of Engagement can only be represented as unstructured text.
- ❑ Concealment relations are not expressible at all.
- ❑ Civil events can only be represented as national holidays.
- ❑ The relationship of various groups of the population to one another is not easily represented.
- ❑ The needs and intentions of groups (and, by inference, the persons that belong to them), can only be represented as unstructured text.



Acknowledgements

- **Work support in part by:**
 - *U.S. Army SBIR Contract Number W15P7T-05-C-T204*



Questions?

