

# Human Interface to Net Centricity

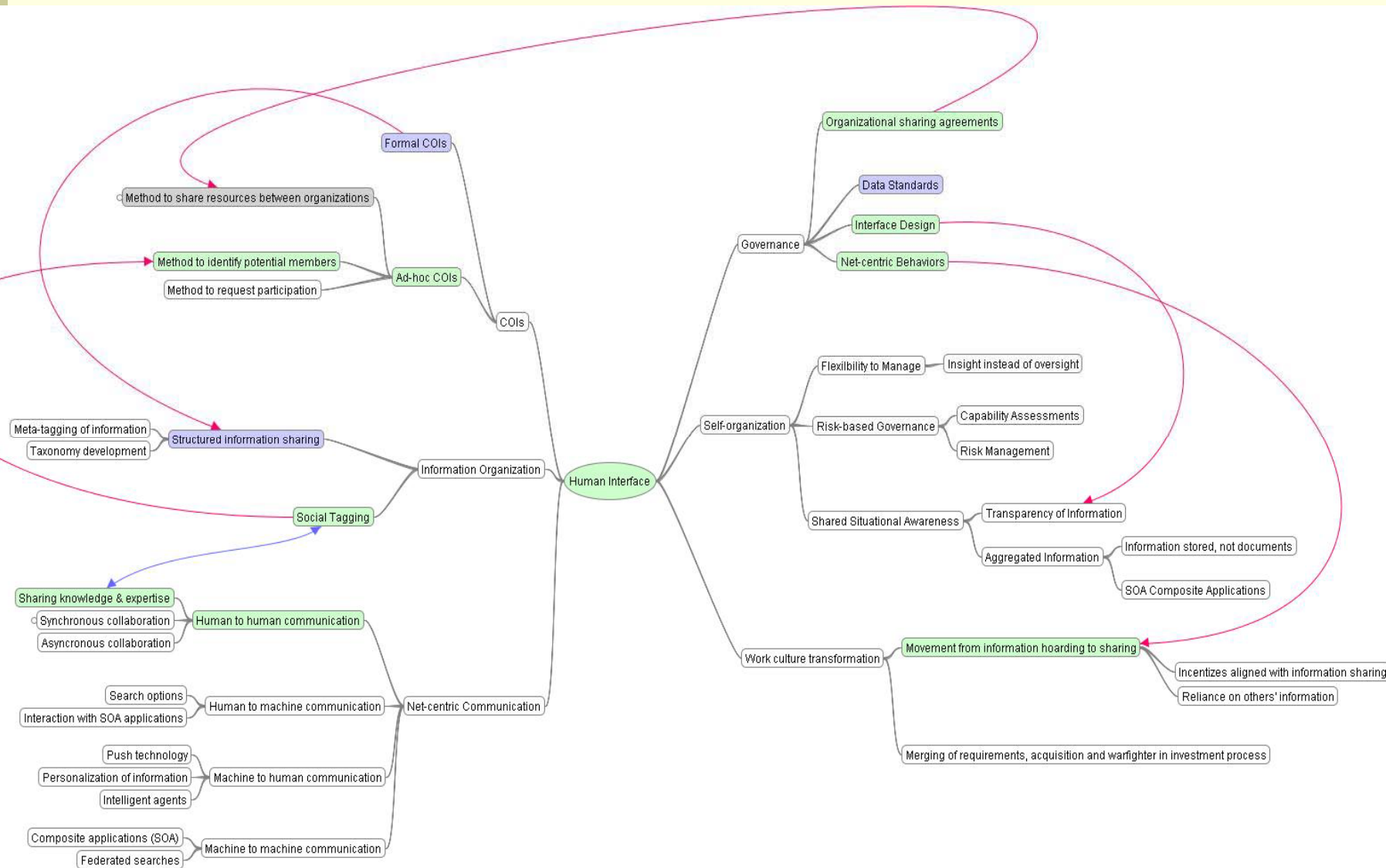
## Presentation for C-154

Noel Dickover

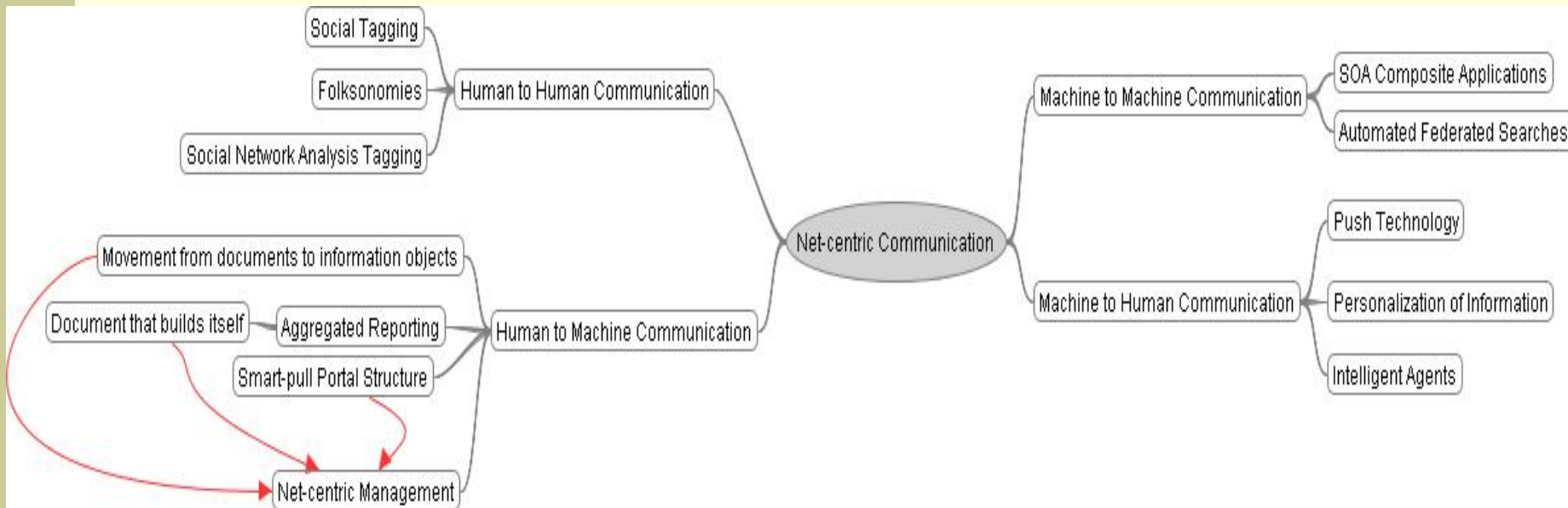
<http://www.communibuild.com>

Leonard Sadauskas

# Human Interface to Netcentricity



# Net-centric Communication



- Human to Human
- Human to Machine
- Machine to Human
- Machine to Machine

# Netcentricity is Tooth to Tail

---

- Inclusion of the support processes critical
- Goal for net-centric support operations is to close capability gaps
- Netcentricity has the potential to enable dramatic increases in the investment process
- There are organizational implications for transforming the investment process to a net-centric environment



# Self-Synchronization in NCW to Self-organization in Business

---

## ■ Self-synchronization in NCW

- Clear & consistent understanding of command intent
- High quality information leading to shared situational awareness
- Competence at all levels
- Trust in the information, personnel & equipment

## ■ Self-organization in the Investment Process

- Strong alignment with strategic goals
- Shared situational awareness by key stakeholders
- Encourage innovation and flexibility
- Empower PM to use acquisition system as a tool
- **Trust** in the network, organization, and personnel



# Human-to-Machine Communication

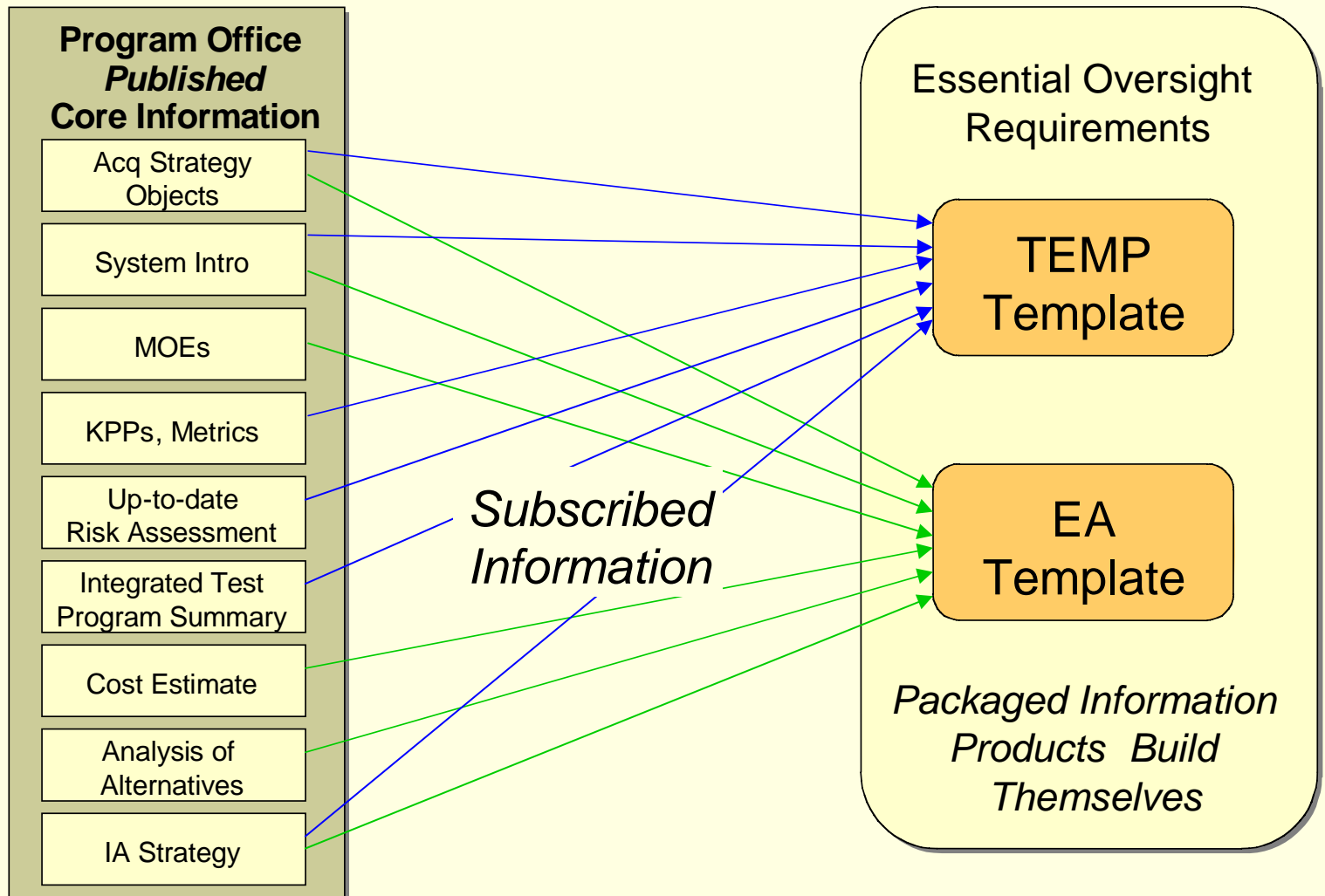
## Key Concepts for Self-organization

---

- Governance
  - Data standards
  - Usability, interface design standards
  - Enforcement of net-centric behaviors
- Development of smart-pull portal structures
- Movement from documents to information objects
- Transformation of the reporting processes
- Support for net-centric investment management



# Packaged Information for Net-centric Insight



# Human-to-Human Communication: Social Software

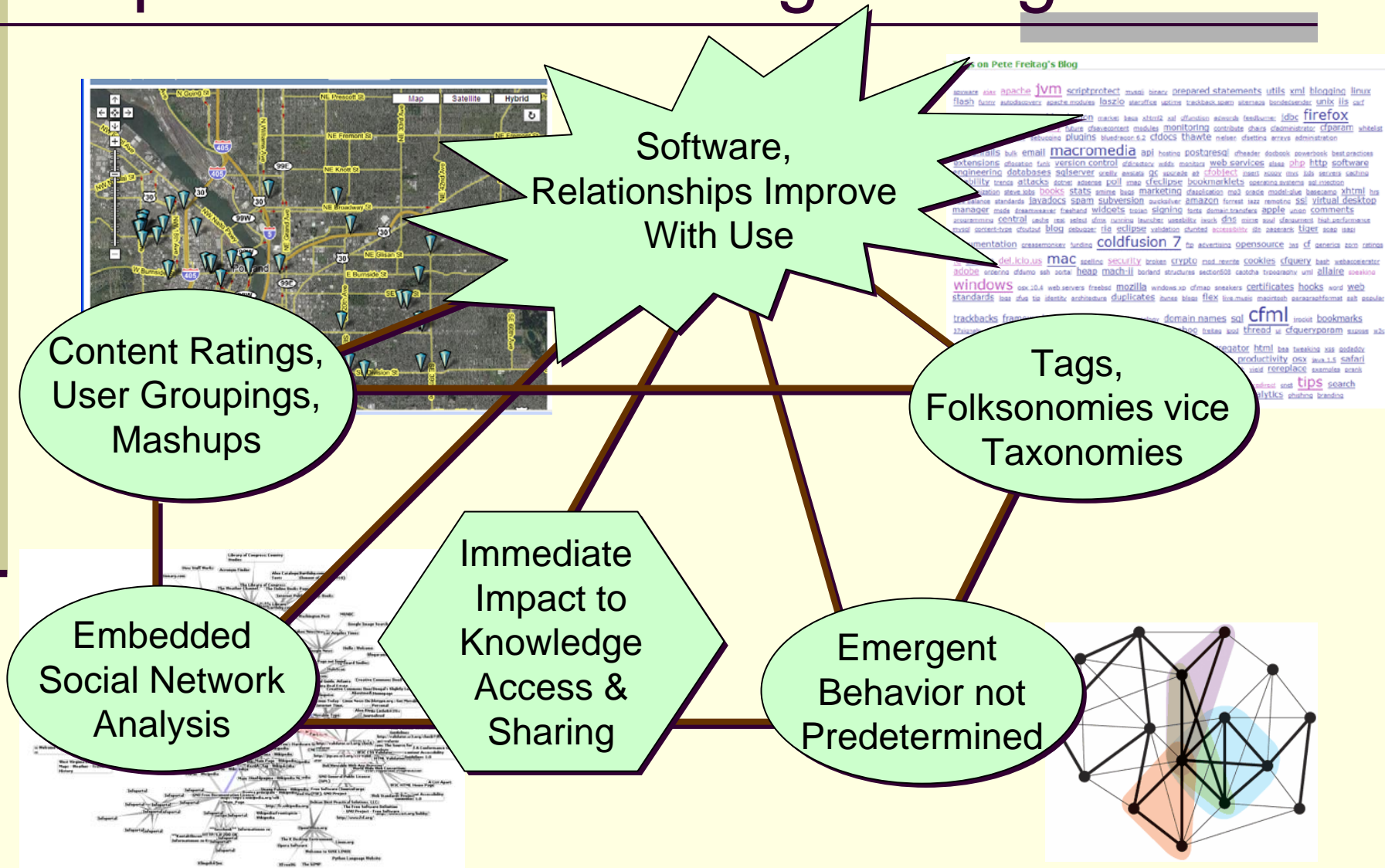
---

- Social Software Technologies
  - Bottom-up, emergent sense-making
  - Engages social domain in managing knowledge
  - Assists work culture transformation
- Social Tagging
- Wikis
- Embedded social network analysis data
- Supporting Ad-hoc COI formation

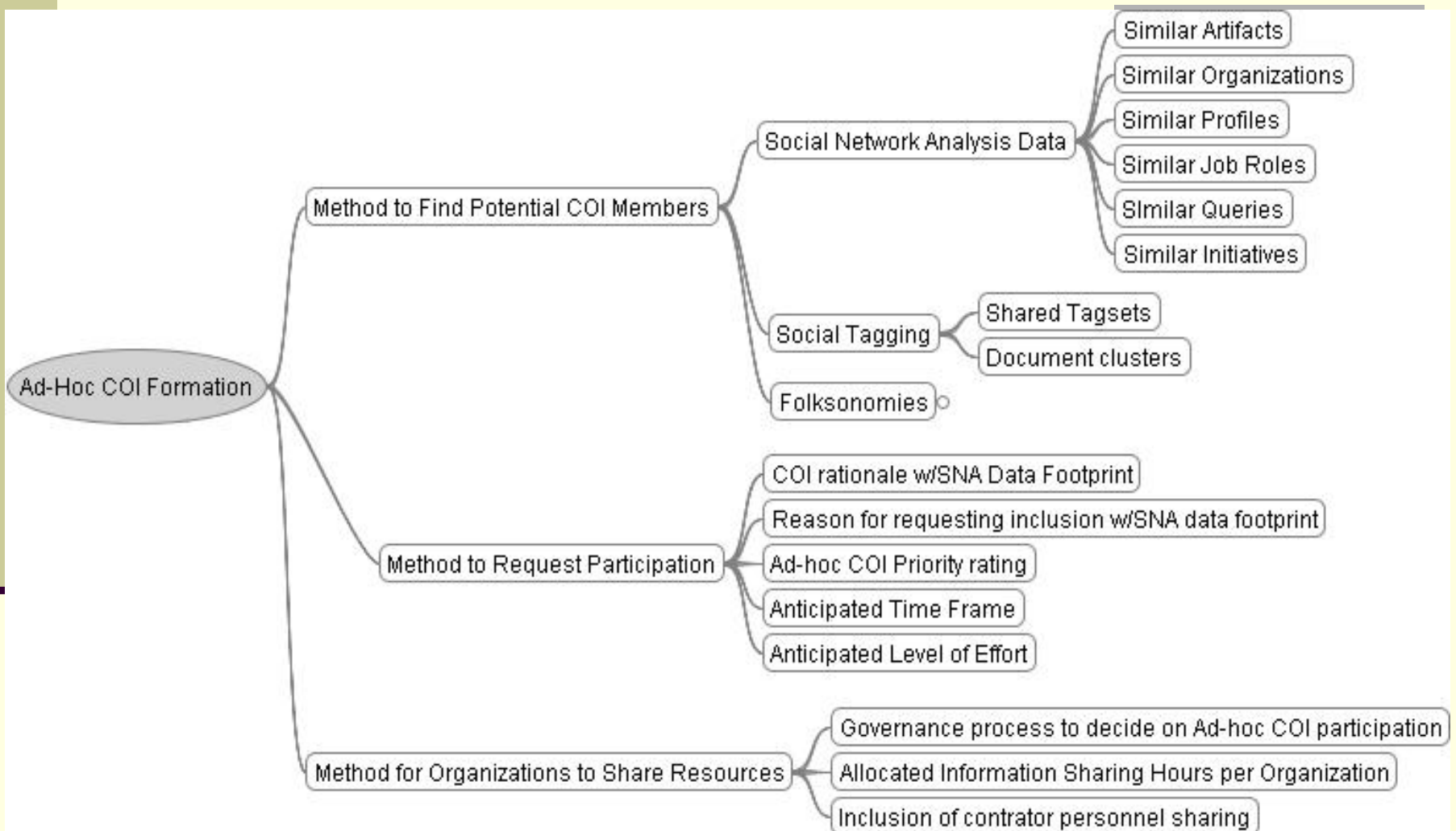




# Social Tagging Provides New Options for Knowledge Integration

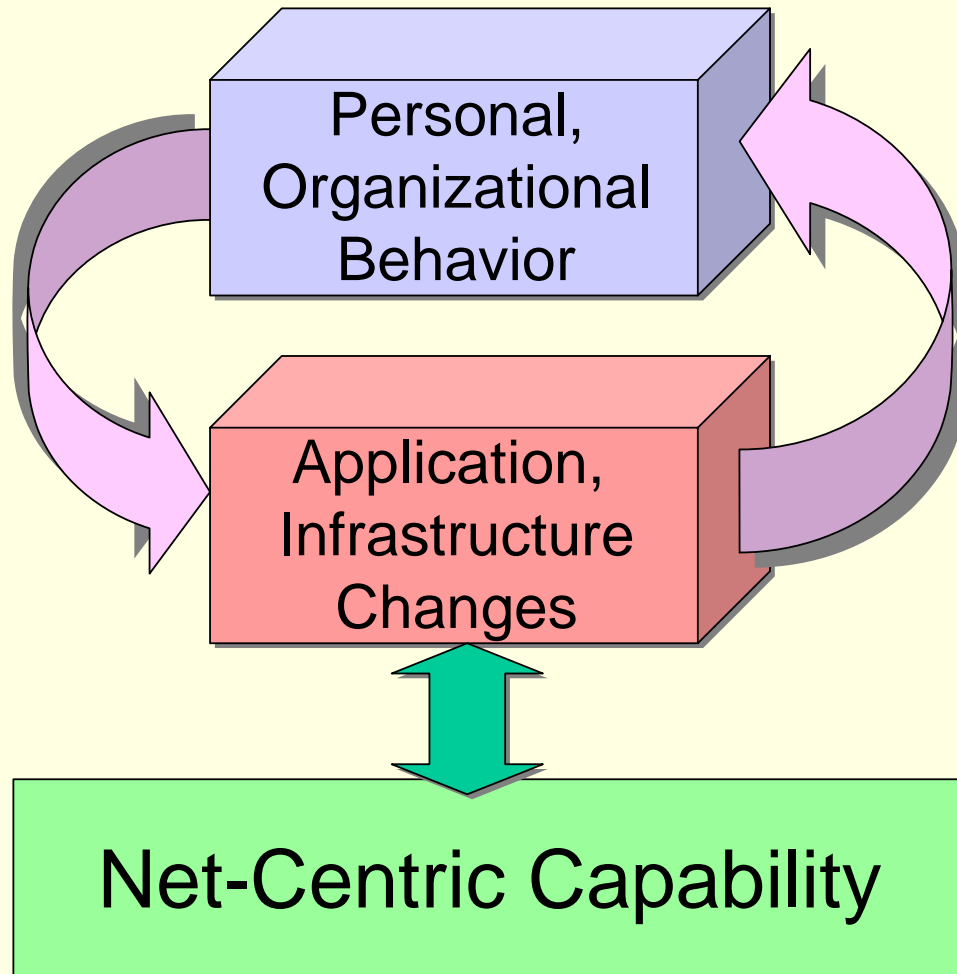


# Supporting Ad-hoc COI Formation



# Measuring Progress Toward a Net-centric Environment

---

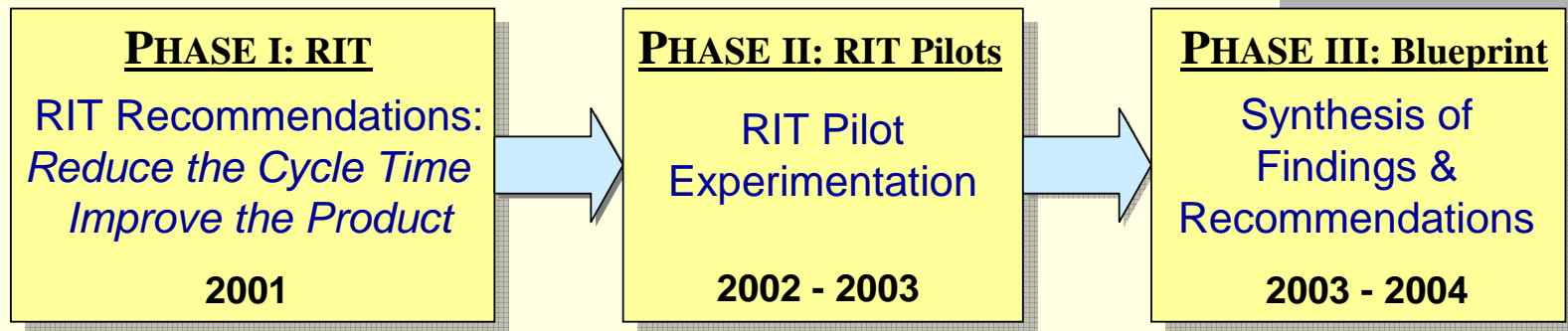




# Backups



# RIT Pilot Project



- **RIT Goal:** Reduce the cycle time to deliver mission-effective IT capabilities to 18 months or less and improve the product
- **Product:** A Blueprint for IT acquisition that is transferable to the acquisition of other IT systems